

G250

ANATOMICO CON SCANSO S2 / 5 MM
ANATOMIC PICTURE S2 / 5 mm



70 x 41 x (11,5x8,8x10) cm

DIMENSIONI
DIMENSION

G250N

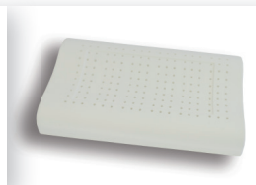
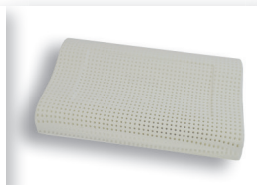
NON FORATO
UNVENTILATED

G250F

FORATO
VENTILATED

G250P

FORATO PARZIALE
PARTIALLY VENTILATED



CODICE CODE	COLORE COLOUR	VERSIONE VERSION	PESO WEIGHT gr ±10%	DENSITÀ DENSITY kg/m³ ±10%	PESO WEIGHT gr ±10%	DENSITÀ DENSITY kg/m³ ±10%	PESO WEIGHT gr ±10%	DENSITÀ DENSITY kg/m³ ±10%
G25010	■	STANDARD STANDARD	1444	52	1169	52	1357	52
G25020	■	STANDARD LEGGERA STANDARD LIGHT	1361	49	1128	49	1293	49
G25030	■	LYMPHA LYMPHA	1444	52	1169	52	1357	52
G250CO	■	LYMPHA LEGGERA LYMPHA LIGHT	1361	49	1128	49	1293	49
G25060	■	LYMPHA ALOE LYMPHA ALOE	1444	52	1169	52	1357	52
G250EO	■	LYMPHA ALOE LEGGERA LYMPHA ALOE LIGHT	1361	49	1128	49	1293	49

09|2015

NATURA DEL PRODOTTO | PRODUCT NATURE

Schiuma poliuretana espansa, esente da C.F.C.
Expanded polyurethane foam, free from C.F.C.

SOSTANZE PERICOLOSE | DANGEROUS SUBSTANCES

Nessuna, in regola con le direttive CEE e ai sensi del regolamento REACH.
No dangerous substances in compliance with EU guidelines and under the REACH Regulation.



ERGONOMICO
ERGONOMIC



SCHUMATO
IN STAMPO
MOULDED FOAM



ANTIACARO
NO-MITES



SENZA CFC
NO CFC



INDEFORMABILE
NON-DEFORMABLE



ESPANSO
AD ACQUA
WATER EXPANDED



TRASPIRANTE
AIR PERMEABLE



SENZA COLLA
NO GLUE



ANALLERGICO
ANALLERGIC



VISCOELASTICO
VISCOELASTIC



RICICLABILE
RECYCLABLE



NON LAVABILE
DO NOT WASH

Caratteristiche meccaniche misurate a 23±2°- U.R. 50% con metodo standard TG/GUA3.
Mechanical properties measured at 23 ± 2°- UR 50% with the standard method TG/GUA3.

Tg
Toscana Gomma

